



Industrie Service

# EU-TYPE EXAMINATION CERTIFICATE

According to Annex IV, Part A of Directive 2014/33/EU

**Certificate No.:** EU-SG 1059

**Notified Body:** TÜV SÜD Industrie Service GmbH  
Westendstr. 199  
80686 Munich - Germany  
Identification No. 0036

**Certificate Holder:** Sautter Lift Components GmbH  
Remsstrasse 2  
70806 Kornwestheim – Germany

**Manufacturer of the Test Sample:** Sautter Lift Components GmbH  
Remsstrasse 2  
70806 Kornwestheim – Germany  
(Manufacturer of Serial Production - see Enclosure)

**Product:** Instantaneous safety gear

**Type:** RF0004

**Directive:** 2014/33/EU

**Reference Standards:** EN 81-20:2020  
EN 81-50:2020

**Test report:** EU-SG 1059 dated 2023-11-23

**Outcome:** The product conforms to the essential health and safety requirements of the mentioned Directive if the requirements of the annex to this EU-type examination certificate are kept.

**Date of Issue:** 2023-12-19

Achim Janocha

Notified Body LCC



# Annex to the EU-Type Examination Certificate No. EU-SG 1059 of 2023-12-19



Industrie Service

## 1 Scope of application

### 1.1 Generally

Following application possibility refer to a brand new pair of safety gear.

Minimum running surface width of guide rails 20 mm

Maximum rated speed car 0.63 m/s

Maximum tripping speed overspeed governor

Car 1.00 m/s

Counterweight 1.65 m/s

### 1.2 Permissible total mass of car and rated load depending on maximum tripping speed

Tripping speed [m/s]	Maximum total mass [kg]	
	Guide rails	
	Blade width = 9 – 10 mm	Blade width = 14 – 16 mm
0,20	8144	8331
0,30	7989	8174
0,40	7783	7962
0.50	7533	7707
0.60	7248	7415
0.70	6938	7098
0.80	6612	6765
0.90	6278	6422
1.00	5942	6079
1.10	5610	5739
1.20	5287	5408
1.32	4914	5027
1.65	4001	4093

## 2 Conditions

### 2.1 In order to provide identification and information about the basic design and its functioning and to show the environmental conditions and connection requirements pertaining to the tested and approved type corresponding drawing

Variant	Drawing No.	Date
RF0004 (09 mm – 10 mm)	107.060.095	2023-07-03
RF0004 (14 mm – 16 mm)	107.060.096	2023-07-03

including stamp dated 2023-11-23 is to be enclosed with the EU-type examination certificate and the annex thereto.

### 2.2 The EU-type examination certificate may only be used in combination with the corresponding annex and enclosure (List of authorized manufacturers of the serial production). The enclosure will be updated immediately after any change by the certification holder.

## 3 Remarks

### 3.1 This EU type-examination certificate was issued according to the following standards:

- EN 81-20:2020 (D), section 5.6.2.1.1.2

## Annex to the EU-Type Examination Certificate No. EU-SG 1059 of 2023-12-19



Industrie Service

– EN 81-50:2020 (D), section 5.3

A revision of this EU type-examination certificate is inevitable in case of changes or additions of the above-mentioned standards or of changes of state of the art.

- 3.2 The test covers the safety gear and the safety gear elements (rollers) and did not include either the connection between the individual safety gear elements (safety gear rods) or the actuation of the electric safety device.
- 3.3 The instantaneous safety gear can also be used to a counterweight in compliance with the permissible total mass according to table 1.2 of this EU-type examination certificate till the permissible tripping speed.
- 3.4 The Examination of compliance with other requirements in accordance with the standard as reduction of the braking effect due to wear-and-tear or alterations to the installation due to the installation's operation such as alterations to the running surfaces of the guide rails, are not part of this EU-type examination.
- 3.5 The test results refer to the safety component “instantaneous safety gear” and the associated EU-type examination only.
- 3.6 The Certification Body LCC of the TÜV SÜD Industrie Service GmbH is a Certification Body accredited by DAkkS according to DIN EN ISO 17065. The accreditation is only valid for the scope of accreditation listed in the Annex of the certificate D-ZE-14153-03-02.

**Enclosure to the EU-Type Examination Certificate  
No. EU- SG 1059 of 2023-12-19**



Industrie Service

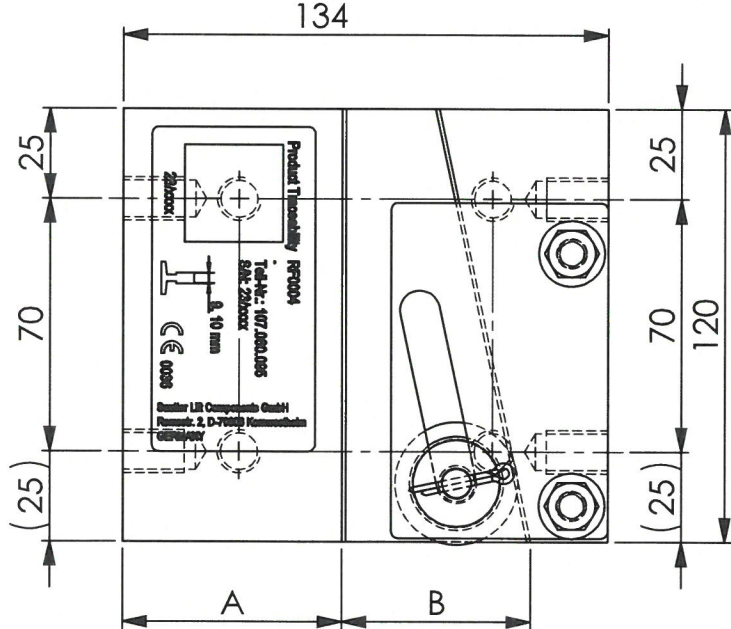
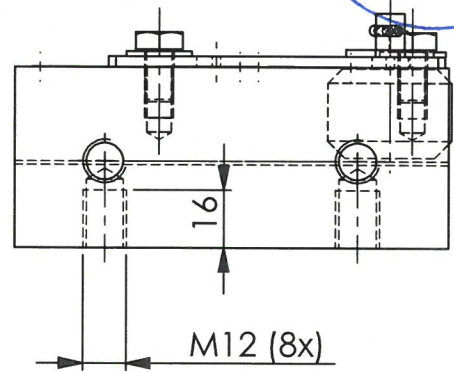
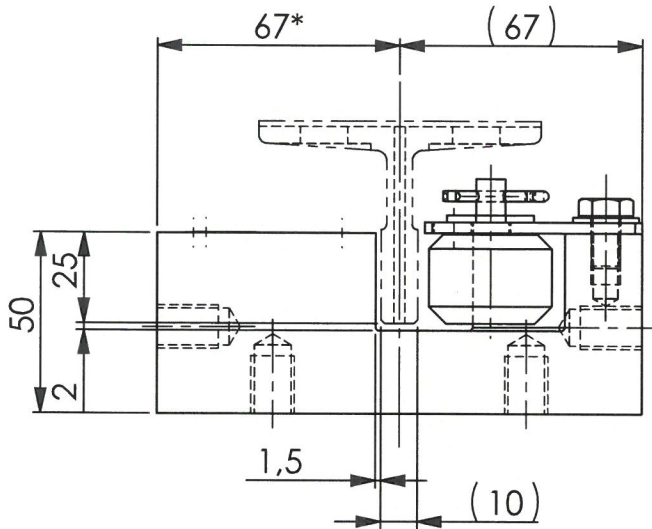
**Authorised Manufacturer of Serial Production – Production Sites (valid from: 2023-12-19):**

<b>Company</b>	Sautter Lift Components GmbH
<b>Address</b>	Remsstrasse 2 70806 Kornwestheim – Deutschland

- END OF DOCUMENT -

Gehäuse	Schienenkopfdicke / blade width	A	B
Nennmaß 10 nominal dim.	9 - 10 mm	60,5	52,2

\* bezogen auf Schienenkopf 10 mm  
related to blade width



23. NOV. 2023

**GEPRÜFT / APPROVED**  
TÜV SÜD Industrie Service GmbH  
Prüflaboratorium für Produkte der Fördertechnik  
Westendstraße 199  
80689 München  
Sachverständige(r) / Expert

*[Signature]*

links left      rechts right

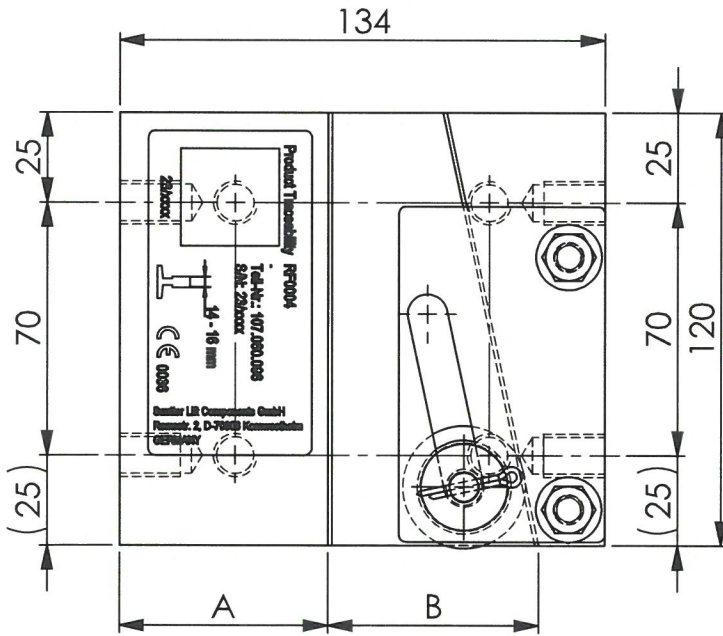
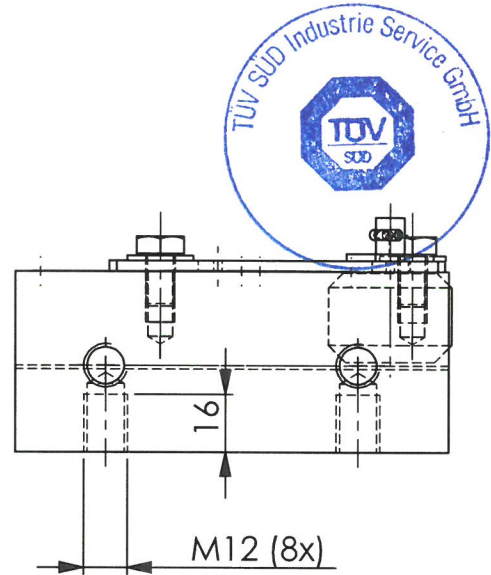
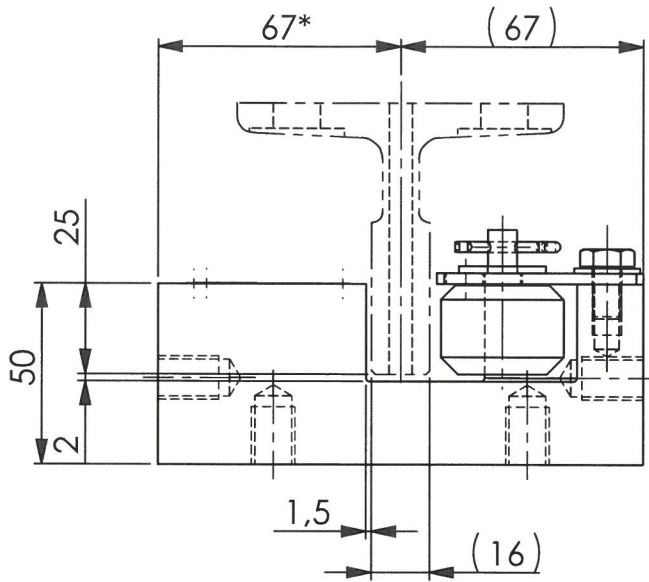


(52,2)      (60,5)

i	TOLERIERUNG ISO 8015 TOLERANCING ISO 8015		General tolerance ISO 2768-mK	M SCALE <b>1:2</b>	<u>SLC - SACHNUMMER BEKENNUNG</u>		
	PROJEKTIONSMETHODE 1 PROJECTION METHOD 1		Dimensions are in millimeters	<b>A4</b>	MATERIAL	MENGE / QUANTITY STÜCK PIECE	LACKIERUNG / PAINTING
h			Workpiece edges ISO 13715	Date	Name	BENENNUNG DESIGNATION	
g				03.07.2023	A.MüncH	<b>ROLLENSPERRFANGVORRICHTUNG RF0004</b>	
f				Chk'd		<b>INSTANTANEOUS SAFETY GEAR RF0004</b>	
e				Appv'd		AUFTRAGSNUMMER: JOB NUMBER:	
d						GEWICHT IN g FÜR 1 STÜCK WEIGHT IN g FOR 1 PIECE	
c						ZEICHNUNGSNUMMER: DRAWING NUMBER:	
b						5454.70	
a						107.060.095	
State Modification    Date    Name					Fabrik-Nr.		BLATT LEAF 1 / 1

Gehäuse	Schielenkopfdicke / blade width	A	B
Nennmaß 16 nominal dim.	14 - 16 mm	57,5	58,5

\* bezogen auf Schienenkopf 16 mm  
related to blade width



23. NOV. 2023

**GEPRÜFT / APPROVED**  
TÜV SÜD Industrie Service GmbH  
Prüflaboratorium für Produkte der Fördertechnik  
Westendstraße 199  
80686 München  
Sachverständigen / Expert

*[Handwritten signature]*

links left      rechts right



(58,2)      (57,5)

TOLERIERUNG ISO 8015  
TOLERANCING ISO 8015  
PROJEKTIONSMETHODE 1  
PROJECTION METHOD 1

General tolerance  
ISO 2768-mK  
Dimensions are in  
millimeters

M  
SCALE  
1:2

SLC - SACHNUMMER BENENNUNG

i			
h			
g			
f			
e			
d			
c			
b			
a			
State Modification	Date	Name	

Workpiece edges  
ISO 13715

A4

MATERIAL

MENGE / QUANTITY GRUNDIERUNG / PRIMER  
STÜCK  
PIECE

LACKIERUNG / PAINTING

Date 03.07.2023 Name A.Münc

BENENNUNG  
DESIGNATION

**ROLLENSPERRFANGVORRICHTUNG RF0004**  
**INSTANTANEOUS SAFETY GEAR RF0004**

AUFTRAGSNUMMER:  
JOB NUMBER:

GEWICHT IN g FÜR 1 STÜCK  
WEIGHT IN g FOR 1 PIECE

ZEICHNUNGSNUMMER:  
DRAWING NUMBER:

BLATT  
LEAF

Fabrik-Nr.

5296.54

107.060.096

1 / 1

