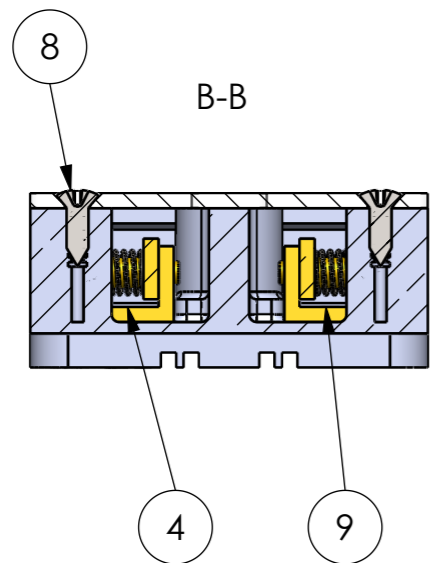
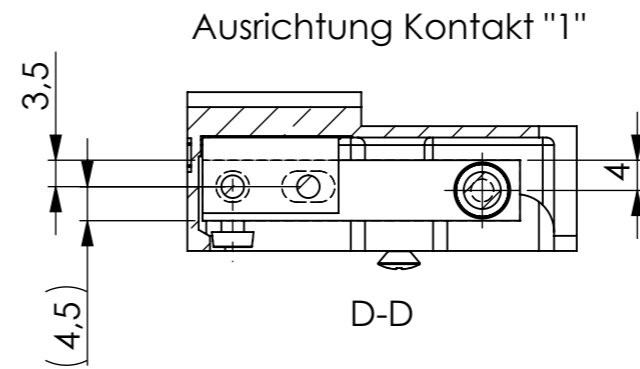
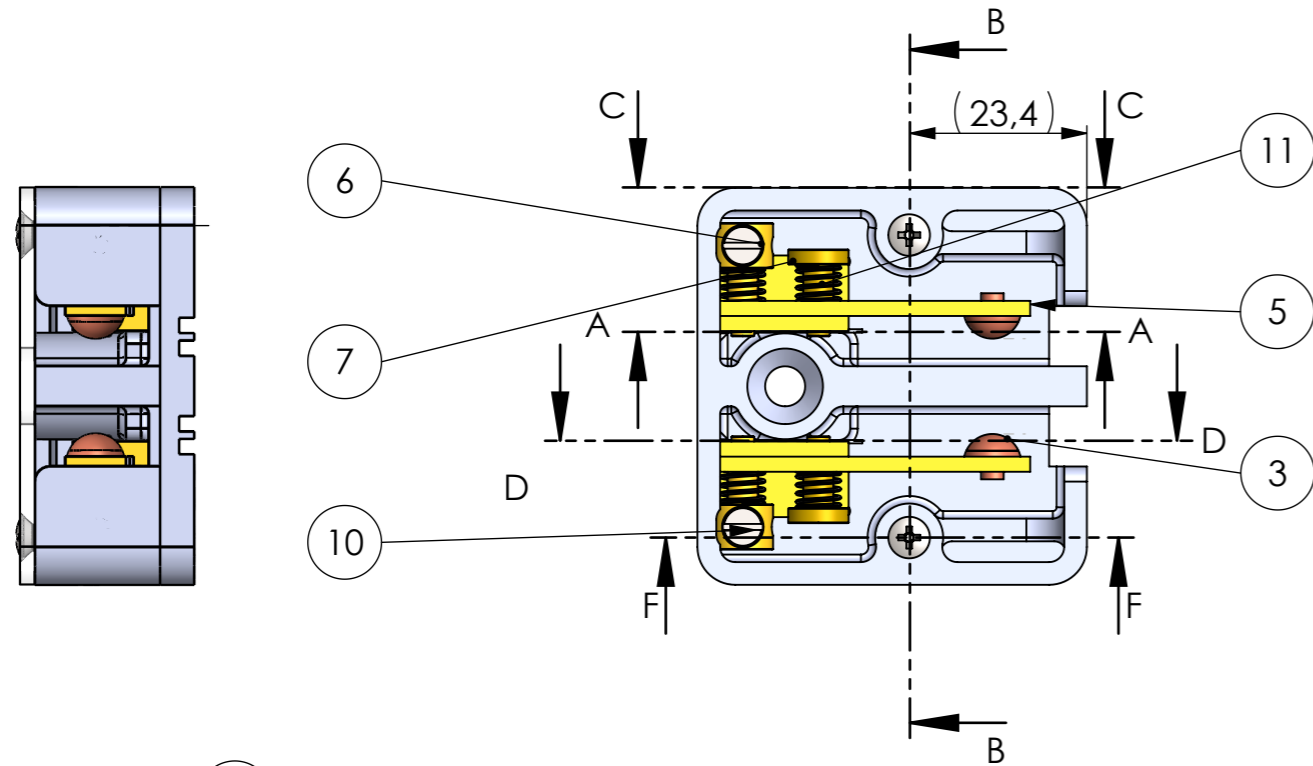
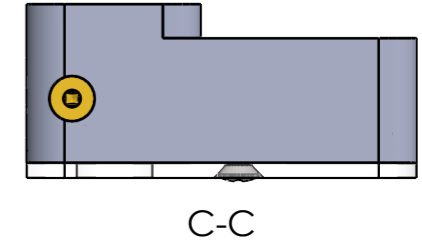
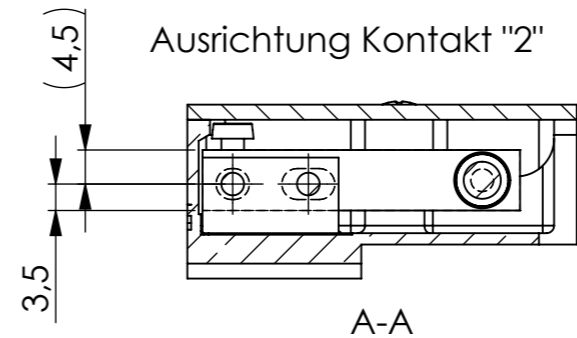
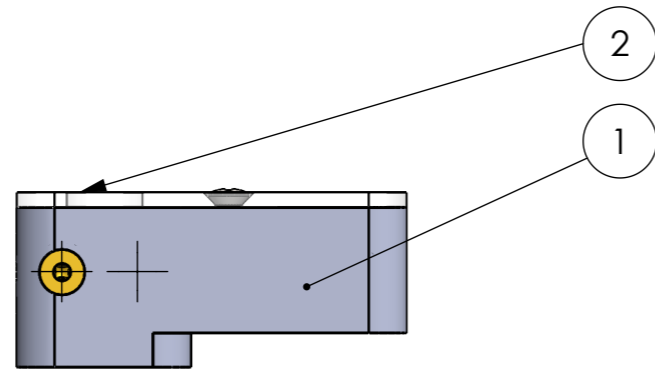
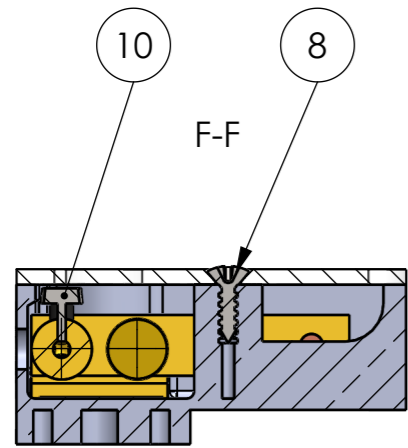


TOLERIERUNG ISO 8015 TOLERANCING ISO 8015 PROJEKTIONSMETHODE 1 PROJECTION METHOD 1		General tolerance ISO 2768-mK	M SCALE 1:1	SLC - SACHNUMMER BENENNUNG Montagezeichnung		
i		Dimensions are in millimeters	A3	MATERIAL	MENGE / QUANTITY STÜCK PIECE	GRUNDIERUNG / PRIMER LACKIERUNG / PAINTING
h		Workpiece edges ISO 13715	Date	BENENNUNG DESIGNATION		
g			Name	Tuerkontakt ZKZ		
f			Drawn 04.05.2023	AUFTRAGSNUMMER: JOB NUMBER: (V04 04.05.2023)		
e			Chk'd	GEWICHT IN g FÜR 1 STÜCK WEIGHT IN g FOR 1 PIECE 218.63		
d			Appv'd	ZEICHNUNGSNUMMER: DRAWING NUMBER: 700.901.100		
c				BLATT LEAF 1 / 2		
b				SLC		
a						
State	Modification	Date	Name			



Pos.	Menge / Qty.	Benennung / Denomination	Zeichn.-Nr. / Drawing-No.	Halbzeug, Werkstoff / Semi-finished part, material
1	1	Gehäuse ZKZ	700.901.004	2.0321 (CuZn37)
2	1	Deckel ZKZ	183.200.852	PMMA
3	2	Niet A 7,4 x 3,0 x 3,0 x 3,0	108.930.309	Kupfer
4	2	MESSINGWINKEL 10x10x2	108.930.308	2.0321 (CuZn37)
5	2	FLACHMESSING MS58/63 8x2x42	108.930.305	2.0321 (CuZn37)
6	2	MS-BLZ D8 d4 d3 L15 GEW M3	108.930.306	2.0321 (CuZn37)
7	2	MS-BLZ D8 d4 d3 L11,5	108.930.307	2.0321 (CuZn37)
8	2	LSK-BLSHR m KRZ-SHLZ ISO7051 ST 2,9x9,5 C H	607.029.095	
9	4	LIN-SHR m KRZ-SHLZ ISO7045 M3x4 4.8 H	603.703.004	
10	2	ZYL-SHR m SHLZ ISO1207 M3X5 4.8VZ	710.003.005	
11	4	DRU-FED 0,5 x 5,5 x 6,6	606.950.010	1.4031(X39Cr13)

TOLERIERUNG ISO 8015
TOLERANCING ISO 8015
PROJEKTIONSMETHODE 1
PROJECTION METHOD 1

General tolerance ISO 2768-mK
Dimensions are in millimeters
Workpiece edges ISO 13715

M SCALE
1:1
A3

SLC - SACHNUMMER BENENNUNG
Montagezeichnung
MATERIAL
MENGE / QUANTITY
STÜCK / STUCK
PIECE

GRUNDIERUNG / PRIMER
LACKIERUNG / PAINTING

BENENNUNG DESIGNATION
Tuerkontakt ZKZ

DATE
04.05.2023
NAME
A.Muench

CHK'D
APPV'D

AUFTRAGSNUMMER:
JOB NUMBER:
(V04 04.05.2023)
Fabrik-Nr.

GEWICHT IN g FÜR 1 STÜCK
WEIGHT IN g FOR 1 PIECE
218.63

ZEICHNUNGSNUMMER:
DRAWING NUMBER:
700.901.100

BLATT
LEAF
2 / 2

SLC