



ADEKPRR 2GRB BF  
 O RGLLFDRORLRO

FB 8.2.2.1 09

DH 1 o

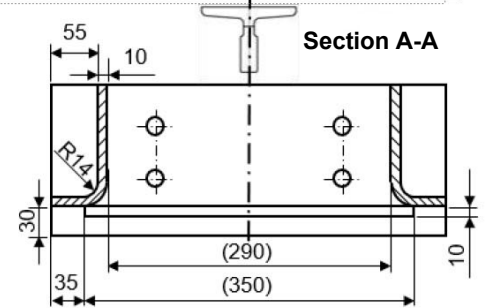
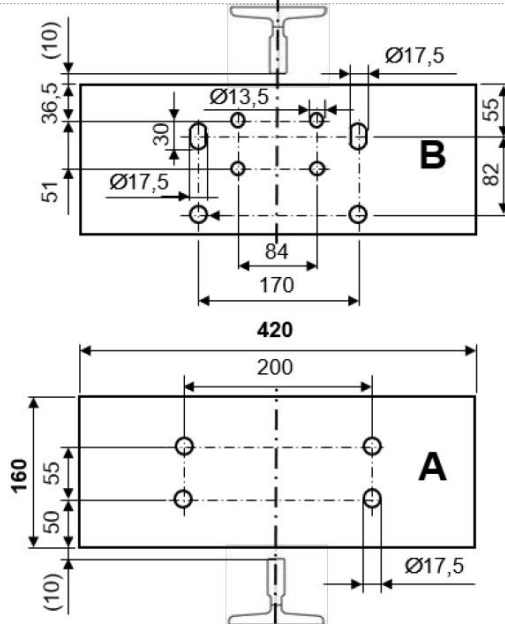
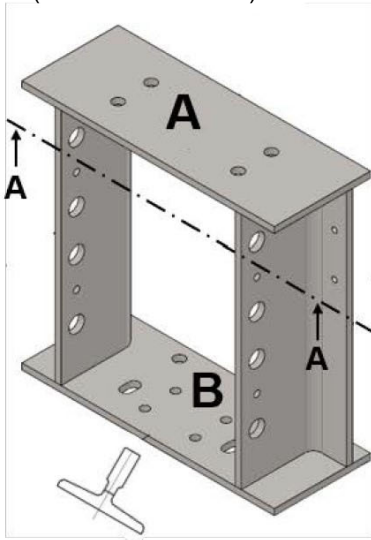
AWWDFKPHWIRU  
 TLU2UGHUIRUP

Referenz:

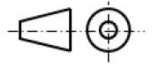
Montage:

**A212 / 02) 21028112 / (**

**Outer Housing**  
 (without modification)



5 .1 .225 r  
 245mm  
 1 . .1 1 a m  
 415mm  
 a a ar a a m  
 ( 1 . .4 4 )



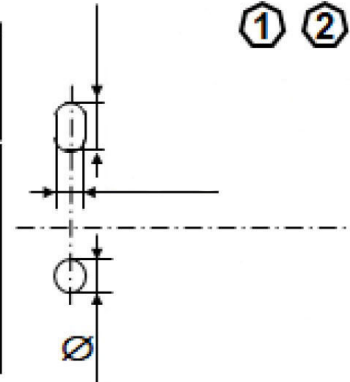
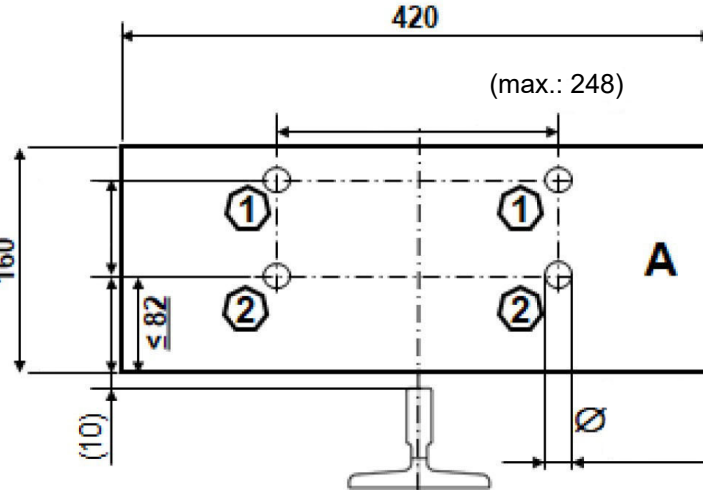
ORGLILFDWLRRI  
 WKHHDGSODWH  
 A (PRWLSODWH)

12:

:KHGHWUPLLLWKH  
 PRWLKROHVIRUWKH  
 KHDGDGERWWRPSODI  
 RWHWKHSRVLWLRRIW  
 VLGHSDUWVMHH  
 VHFWR

**ALTERNATIVE:**

→ Adaptive plates

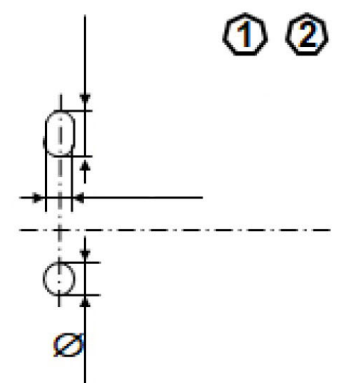
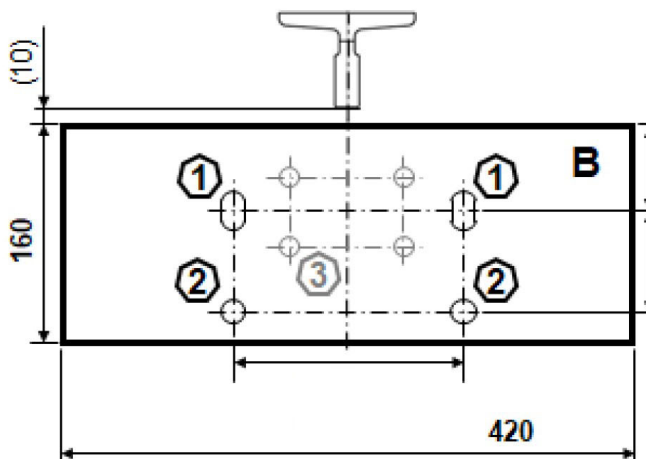


**Note:**  
 - at least 4 boreholes  
 - at least 4 x M12 12.9

**Modification of**  
**the Bottomplate**

**Selection:**

- 2 or 4 holes
- round hole or elongated hole
- Diameter or Length/Width
- Positioning



③ Elimination mounting hole for pattern guide shoes